

NOTES:

- 1) FOR OPTIMAL REINFORCEMENT PLACEMENT IN THE NUDURA FORM, SPACING OF HORIZONTAL REINFORCEMENT TO BE SPECIFIED AT 18" (457mm) O.C. AND VERTICAL REINFORCEMENT TO BE SPECIFIED AT MULTIPLES OF 8" (203mm) O.C. REFER TO NUDURA REINFORCEMENT PLACEMENT DETAILS.
- 2) AIR BARRIER/DRAINAGE FLASHINGS TO BE INSTALLED AROUND COMPLETE OPENING PERIMETER AS PER TREMCO/NUDURA APPLICATION INSTRUCTIONS OR AS DETAILED BY LOCAL APPLICABLE CODES (CODE GOVERNS).

This detail is for general informational purposes, only. The project design professional determines, in its sole discretion, whether this detail or a functionally equivalent detail is best suited for the project with respect to any architecture, engineering, and design requirements, including any local building code requirements. If this document is not reviewed and the product is not approved for use by a licensed design professional, the customer agrees that the detail may contain substantive flaws requiring correction, and hereby releases Tremco CPG Inc. and Prebuck, LLC from any and all liability related to the design and installation of the product. This detail is subject to change without notice. Contact Tremco and Prebuck to ensure you have the most recent version.

Non Combustible Construction - Doors



Nudura Technical Support: 866-468-6299
International: +1 705-726-9499

Detail: Nudura 6" (152mm) Form Unit, Wood Buck Mounted Aluminum Entrance Door at Head and Threshold, Brick Veneer Finish

Drawn by: TVC

Checked by: KS

Scale: 1:8

Revision #: 06

Revised by: KAB

Date: 3/13/2024

File Name:

E6E04



Construction Products Group

www.tremcocpg.com

OPENING REINFORCEMENT AS
PER CODE OR AS SPECIFIED

MIN. $\frac{1}{2}$ " (13mm) GYPSUM BOARD

1 1/2"
(38mm) MIN.
COVER

ENGINEERED FRAMING SYSTEM
BY PREBUCK LLC OR FUNCTIONAL
EQUIVALENT

EXOAIR 110AT, DYMONIC 100
OR FUNCTIONAL EQUIVALENT
3" (76 mm) MIN ON EPS BOTH
SIDES (SEE NOTE 2)

GYPSUM BOARD RETURN
TO FRAME

HORIZ/VERT REINFORCEMENT
AS PER CODE OR AS SPECIFIED
(SEE NOTE 1)

ALUMINUM DOOR

CONTINUOUS AIR SEAL
CAULKING TO MASONRY

BRICK VENEER c/w 1" (25mm)
AIR SPACE AND BRICK TIES

NUDURA 6" (152mm)
STANDARD FORM UNIT

TREMCO EXOAIR 230 OR
FUNCTIONAL EQUIVALENT

NOTES:

1) FOR OPTIMAL REINFORCEMENT PLACEMENT IN THE NUDURA FORM,
SPACING OF HORIZONTAL REINFORCEMENT TO BE SPECIFIED AT 18" (457mm)
O.C. AND VERTICAL REINFORCEMENT TO BE SPECIFIED AT MULTIPLES OF 8"
(203mm) O.C. REFER TO NUDURA REINFORCEMENT PLACEMENT DETAILS.

2) AIR BARRIER/DRAINAGE FLASHINGS TO BE INSTALLED AROUND COMPLETE
OPENING PERIMETER AS PER TREMCO/NUDURA APPLICATION INSTRUCTIONS
OR AS DETAILED BY LOCAL APPLICABLE CODES (CODE GOVERNS).

This detail is for general informational purposes, only. The project design professional determines, in its sole discretion, whether this detail or a functionally equivalent detail is best suited for the project with respect to any architecture, engineering, and design requirements, including any local building code requirements. If this document is not reviewed and the product is not approved for use by a licensed design professional, the customer agrees that the detail may contain substantive flaws requiring correction, and hereby releases Tremco CPG Inc. and Prebuck, LLC from any and all liability related to the design and installation of the product. This detail is subject to change without notice. Contact Tremco and Prebuck to ensure you have the most recent version.

Non Combustible Construction - Doors



Nudura Technical Support: 866-468-6299
International: +1 705-726-9499

Detail: Nudura 6" (152mm) Form Unit, Wood Buck Mounted Aluminum Jamb Detail,
Brick Veneer Finish, Direct Attached

Drawn by: TVC

Checked by: KS

Scale: 1:8

Revision #: 04

Revised by: KAB

Date: 3/13/2024

File Name:

E6E05



Construction Products Group

www.tremcocpg.com

NUDURA 6" (152mm)
STANDARD FORM UNIT

BRICK VENEER c/w 1"
(25mm) AIR SPACE AND
BRICK TIES

TREMCO EXOAIR 230 OR
FUNCTIONAL EQUIVALENT

WEEP HOLES AND
THROUGH WALL FLASHING
AS PER CODE OR AS
SPECIFIED

1 1/2"
(38mm) MIN.
COVER

STEEL LINTEL WITH
CONTINUOUS CAULKING
AROUND FRAME TO
MASONRY

BRICK VENEER BEYOND

ALUMINUM COMMERCIAL
SIDE LIGHT FRAME

EXTERIOR CONCRETE
SLAB

COMPRESSIBLE FELT
FILLER STRIP

NUDURA 6" (152mm)
BRICK LEDGE FORM
UNIT BEYOND

MIN. 1/2" (13mm) GYPSUM BOARD

HORIZ/VERT REINFORCEMENT
AS PER CODE OR AS SPECIFIED
(SEE NOTE 1)

LINTEL REINFORCEMENT AS
PER CODE OR AS SPECIFIED

EXOAIR 110AT, DYMONIC 100
OR FUNCTIONAL EQUIVALENT
3" (76 mm) MIN ON EPS
(SEE NOTE 2)

STEEL LINTEL AS SPECIFIED
(w/NELSON STUDS OR BOLTS AS
PER OPENING REQUIREMENTS)

FRAME ANCHOR CLIPS SECURED TO
CONCRETE AND FRAME AS SPECIFIED

OPENING REINFORCEMENT AS
PER CODE OR AS SPECIFIED

FLOOR FINISH AS SPECIFIED

CONCRETE
SLAB ON GRADE

NUDURA 6" (152mm) DOUBLE TAPER
TOP FORM UNIT OR HAND CUT
TAPER AT WIDTH OF DOOR
OPENING (BOTH SIDES)

NOTES:

- 1) FOR OPTIMAL REINFORCEMENT PLACEMENT IN THE NUDURA FORM, SPACING OF HORIZONTAL REINFORCEMENT TO BE SPECIFIED AT 18" (457mm) O.C. AND VERTICAL REINFORCEMENT TO BE SPECIFIED AT MULTIPLES OF 8" (203mm) O.C. REFER TO NUDURA REINFORCEMENT PLACEMENT DETAILS.
- 2) AIR BARRIER/DRAINAGE FLASHINGS TO BE INSTALLED AROUND COMPLETE OPENING PERIMETER AS PER TREMCO/NUDURA APPLICATION INSTRUCTIONS OR AS DETAILED BY LOCAL APPLICABLE CODES (CODE GOVERNS).

This detail is for general informational purposes, only. The project design professional determines, in its sole discretion, whether this detail or a functionally equivalent detail is best suited for the project with respect to any architecture, engineering, and design requirements, including any local building code requirements. If this document is not reviewed and the product is not approved for use by a licensed design professional, the customer agrees that the detail may contain substantive flaws requiring correction, and hereby releases Tremco CPG Inc. and Prebuck, LLC from any and all liability related to the design and installation of the product. This detail is subject to change without notice. Contact Tremco and Prebuck to ensure you have the most recent version.

Non Combustible Construction - Doors



Nudura Technical Support: 866-468-6299
International: +1 705-726-9499

Detail: Nudura 6" (152mm) Form Unit, Concrete Mounted, Aluminum Transom And Side Light At Head And Threshold, Brick Veneer Finish

Drawn by: TVC

Checked by: KS

Scale: 1:8

Revision #: 06

Revised by: KAB

Date: 3/13/2024

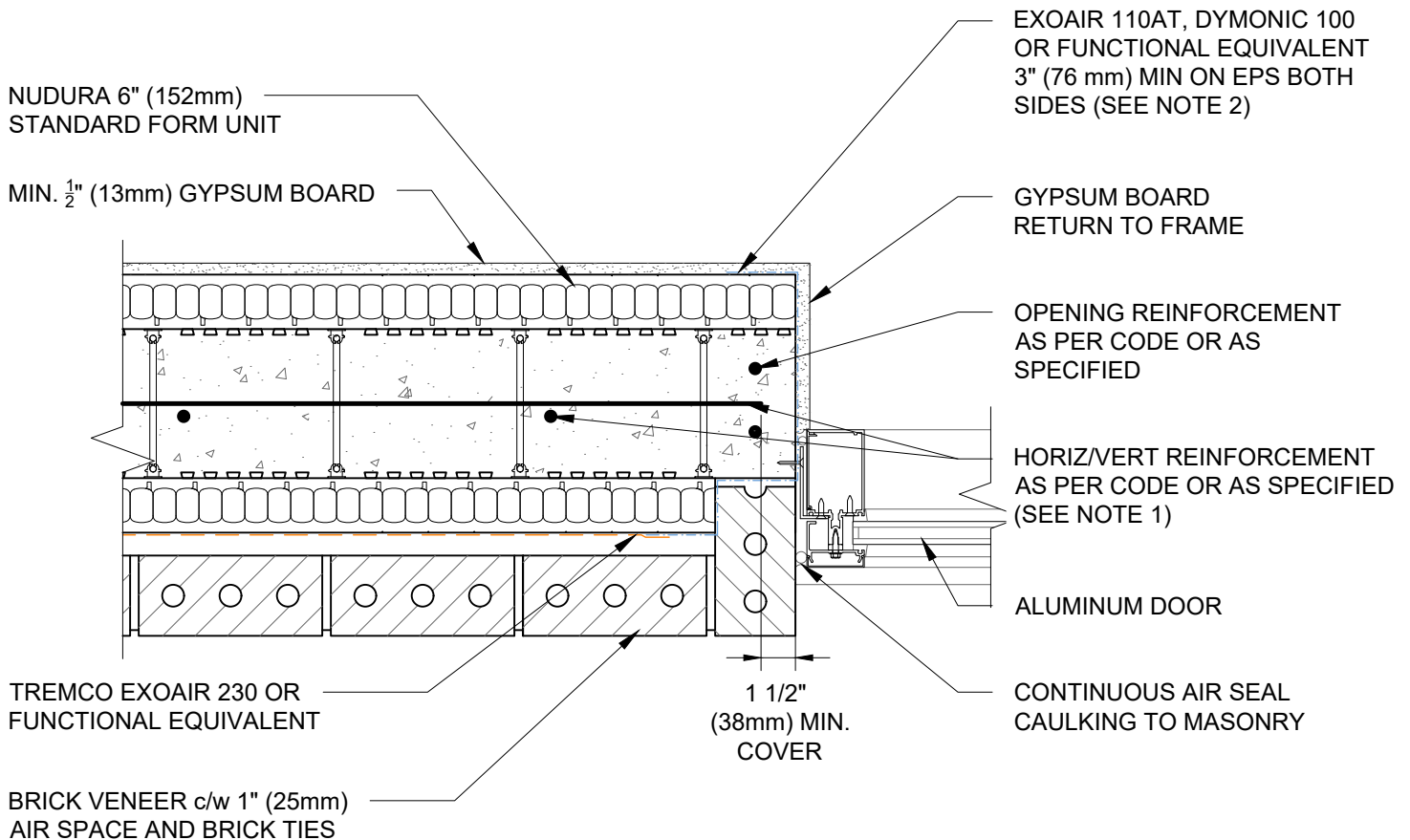
File Name:

E6E06



Construction Products Group

www.tremcocpg.com



NOTES:

- 1) FOR OPTIMAL REINFORCEMENT PLACEMENT IN THE NUDURA FORM, SPACING OF HORIZONTAL REINFORCEMENT TO BE SPECIFIED AT 18" (457mm) O.C. AND VERTICAL REINFORCEMENT TO BE SPECIFIED AT MULTIPLES OF 8" (203mm) O.C. REFER TO NUDURA REINFORCEMENT PLACEMENT DETAILS.
- 2) AIR BARRIER/DRAINAGE FLASHINGS TO BE INSTALLED AROUND COMPLETE OPENING PERIMETER AS PER TREMCO/NUDURA APPLICATION INSTRUCTIONS OR AS DETAILED BY LOCAL APPLICABLE CODES (CODE GOVERNS).

This detail is for general informational purposes only. The project design professional determines, in its sole discretion, whether this detail or a functionally equivalent detail is best suited for the project with respect to any architecture, engineering, and design requirements, including any local building code requirements. If this document is not reviewed and the product is not approved for use by a licensed design professional, the customer agrees that the detail may contain substantive flaws requiring correction, and hereby releases Tremco CPG Inc. and Prebuck, LLC from any and all liability related to the design and installation of the product. This detail is subject to change without notice. Contact Tremco and Prebuck to ensure you have the most recent version.

Non Combustible Construction - Doors

Detail: Nudura 6" (152mm) Form Unit, Concrete Mounted, Aluminum Sidelight Jamb Detail, Brick Veneer Finish

File Name:

Drawn by: TVC

Checked by: KS

Scale: 1:8

E6E07

Revision #: 04

Revised by: KAB

Date: 3/13/2024

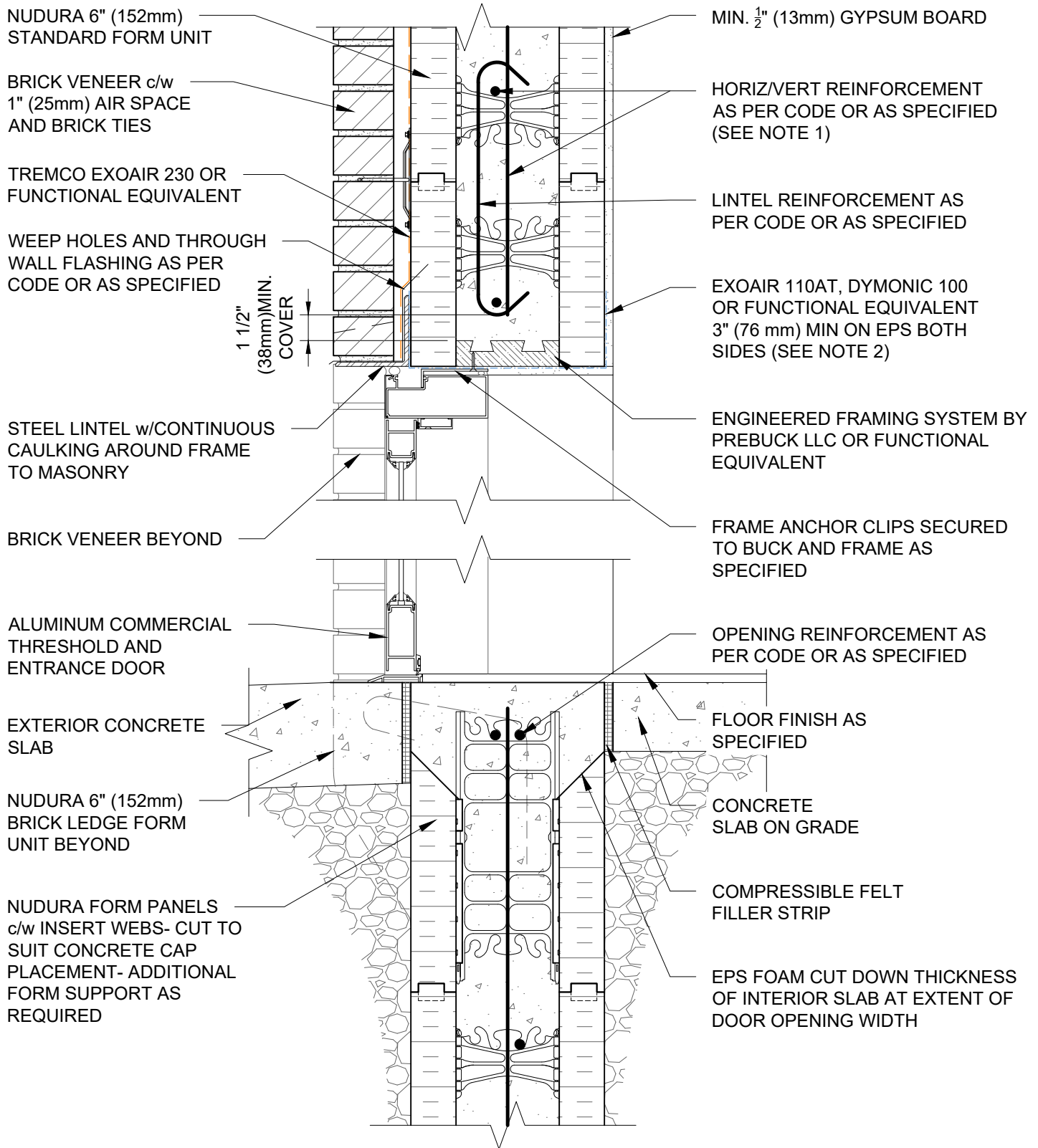
www.tremcocpg.com



Nudura Technical Support: 866-468-6299
International: +1 705-726-9499



Construction Products Group



NOTES:

- 1) FOR OPTIMAL REINFORCEMENT PLACEMENT IN THE NUDURA FORM, SPACING OF HORIZONTAL REINFORCEMENT TO BE SPECIFIED AT 18" (457mm) O.C. AND VERTICAL REINFORCEMENT TO BE SPECIFIED AT MULTIPLES OF 8" (203mm) O.C. REFER TO NUDURA REINFORCEMENT PLACEMENT DETAILS.
- 2) AIR BARRIER/DRAINAGE FLASHINGS TO BE INSTALLED AROUND COMPLETE OPENING PERIMETER AS PER TREMCO/NUDURA APPLICATION INSTRUCTIONS OR AS DETAILED BY LOCAL APPLICABLE CODES (CODE GOVERNS).

This detail is for general informational purposes, only. The project design professional determines, in its sole discretion, whether this detail or a functionally equivalent detail is best suited for the project with respect to any architecture, engineering, and design requirements, including any local building code requirements. If this document is not reviewed and the product is not approved for use by a licensed design professional, the customer agrees that the detail may contain substantive flaws requiring correction, and hereby releases Tremco CPG Inc. and Prebuck, LLC from any and all liability related to the design and installation of the product. This detail is subject to change without notice. Contact Tremco and Prebuck to ensure you have the most recent version.

Non Combustible Construction - Doors

Detail: Nudura 6" (152mm) Form Unit, Wood Buck Mounted Aluminum Entrance Door At Head And Concrete Threshold, Brick Veneer Finish

File Name:

Drawn by: KS

Checked by: KS

Scale: 1:8

E6E08

Revision #: 01

Revised by: KAB

Date: 3/13/2024

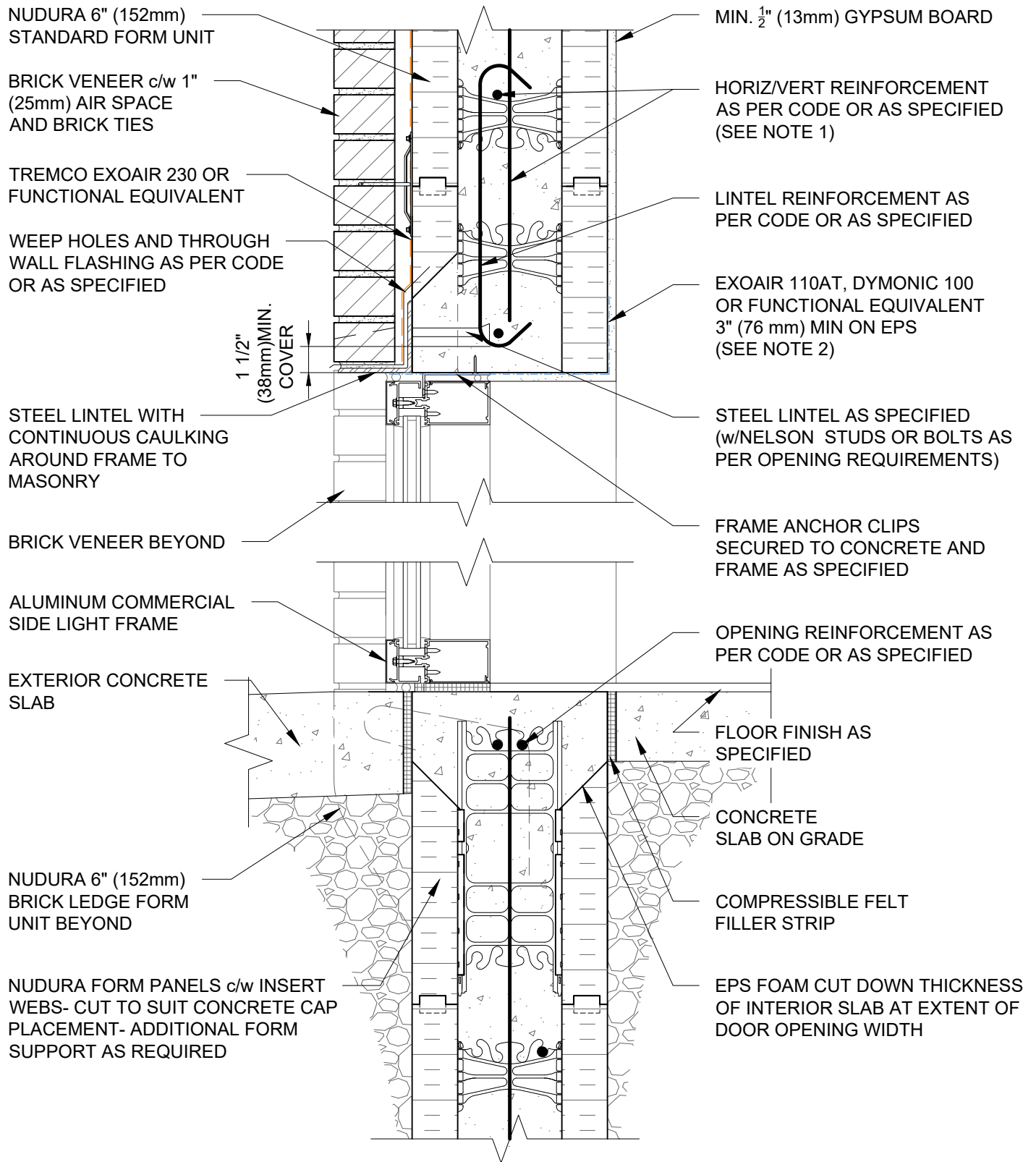
www.tremcocpg.com



Nudura Technical Support: 866-468-6299
International: +1 705-726-9499



Construction Products Group



NOTES:

- 1) FOR OPTIMAL REINFORCEMENT PLACEMENT IN THE NUDURA FORM, SPACING OF HORIZONTAL REINFORCEMENT TO BE SPECIFIED AT 18" (457mm) O.C. AND VERTICAL REINFORCEMENT TO BE SPECIFIED AT MULTIPLES OF 8" (203mm) O.C. REFER TO NUDURA REINFORCEMENT PLACEMENT DETAILS.
- 2) AIR BARRIER/DRAINAGE FLASHINGS TO BE INSTALLED AROUND COMPLETE OPENING PERIMETER AS PER TREMCO/NUDURA APPLICATION INSTRUCTIONS OR AS DETAILED BY LOCAL APPLICABLE CODES (CODE GOVERNS).

This detail is for general informational purposes, only. The project design professional determines, in its sole discretion, whether this detail or a functionally equivalent detail is best suited for the project with respect to any architecture, engineering, and design requirements, including any local building code requirements. If this document is not reviewed and the product is not approved for use by a licensed design professional, the customer agrees that the detail may contain substantive flaws requiring correction, and hereby releases Tremco CPG Inc. and Prebuck, LLC from any and all liability related to the design and installation of the product. This detail is subject to change without notice. Contact Tremco and Prebuck to ensure you have the most recent version.

Non Combustible Construction - Doors

Detail: Nudura 6" (152mm) Form Unit, Concrete Mounted Aluminum Transom And Side Light At Head And Concrete Threshold, Brick Veneer Finish

File Name:

Drawn by: KS

Checked by: KS

Scale: 1:8

E6E09

Revision #: 01

Revised by: KAB

Date: 3/13/2024

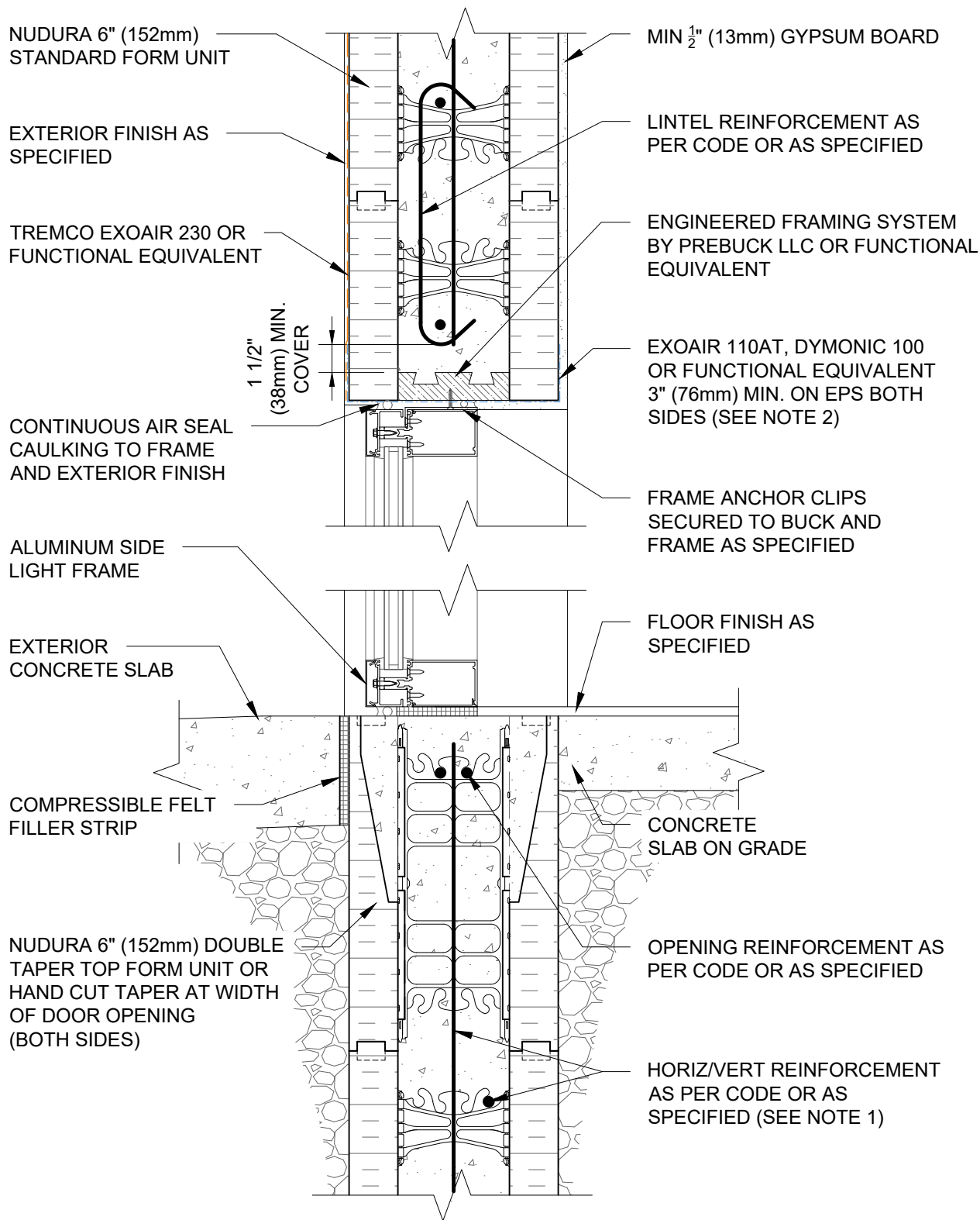
www.tremcocpg.com



Nudura Technical Support: 866-468-6299
International: +1 705-726-9499



Construction Products Group



NOTES:

- 1) FOR OPTIMAL REINFORCEMENT PLACEMENT IN THE NUDURA FORM, SPACING OF HORIZONTAL REINFORCEMENT TO BE SPECIFIED AT 18" (457mm) O.C. AND VERTICAL REINFORCEMENT TO BE SPECIFIED AT MULTIPLES OF 8" (203mm) O.C. REFER TO NUDURA REINFORCEMENT PLACEMENT DETAILS.
- 2) AIR BARRIER/DRAINAGE FLASHINGS TO BE INSTALLED AROUND COMPLETE OPENING PERIMETER AS PER TREMCO/NUDURA APPLICATION INSTRUCTIONS OR AS DETAILED BY LOCAL APPLICABLE CODES (CODE GOVERNS).

This detail is for general informational purposes only. The project design professional determines, in its sole discretion, whether this detail or a functionally equivalent detail is best suited for the project with respect to any architecture, engineering, and design requirements, including any local building code requirements. If this document is not reviewed and the product is not approved for use by a licensed design professional, the customer agrees that the detail may contain substantive flaws requiring correction, and hereby releases Tremco CPG Inc. and Prebuck, LLC from any and all liability related to the design and installation of the product. This detail is subject to change without notice. Contact Tremco and Prebuck to ensure you have the most recent version.

Non Combustible Construction - Doors

Detail: Nudura 6" (152mm) Form Unit, Wood Buck Mounted Aluminum Transom and Sidelight at Head and Threshold, Exterior Finish as Specified

Drawn by: TVC

Checked by: KS

Scale: 1:8

Revision #: 06

Revised by: KAB

Date: 3/13/2024

File Name:

E6G07

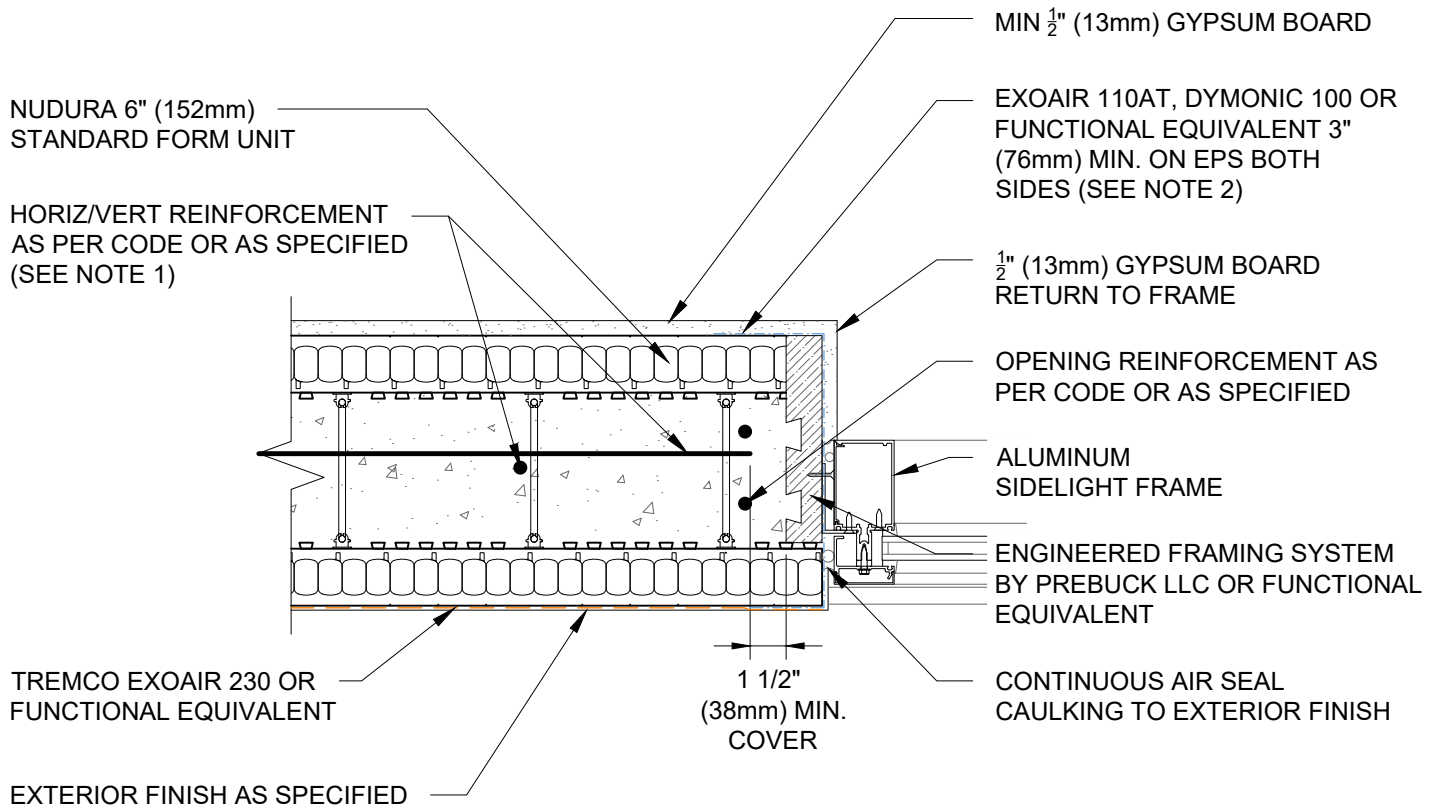


Nudura Technical Support: 866-468-6299
International: +1 705-726-9499

www.tremcocpg.com



Construction Products Group



NOTES:

- 1) FOR OPTIMAL REINFORCEMENT PLACEMENT IN THE NUDURA FORM, SPACING OF HORIZONTAL REINFORCEMENT TO BE SPECIFIED AT 18" (457mm) O.C. AND VERTICAL REINFORCEMENT TO BE SPECIFIED AT MULTIPLES OF 8" (203mm) O.C. REFER TO NUDURA REINFORCEMENT PLACEMENT DETAILS.
- 2) AIR BARRIER/DRAINAGE FLASHINGS TO BE INSTALLED AROUND COMPLETE OPENING PERIMETER AS PER TREMCO/NUDURA APPLICATION INSTRUCTIONS OR AS DETAILED BY LOCAL APPLICABLE CODES (CODE GOVERNS).

This detail is for general informational purposes, only. The project design professional determines, in its sole discretion, whether this detail or a functionally equivalent detail is best suited for the project with respect to any architecture, engineering, and design requirements, including any local building code requirements. If this document is not reviewed and the product is not approved for use by a licensed design professional, the customer agrees that the detail may contain substantive flaws requiring correction, and hereby releases Tremco CPG Inc. and Prebuck, LLC from any and all liability related to the design and installation of the product. This detail is subject to change without notice. Contact Tremco and Prebuck to ensure you have the most recent version.

Non Combustible Construction - Doors

Detail: Nudura 6" (152mm) Form Unit, Wood Buck Mounted Aluminum Side Light
Detail, Exterior Finish as Specified

File Name:

Drawn by: TVC

Checked by: KS

Scale: 1:8

E6G08

Revision #: 05

Revised by: KAB

Date: 3/13/2024

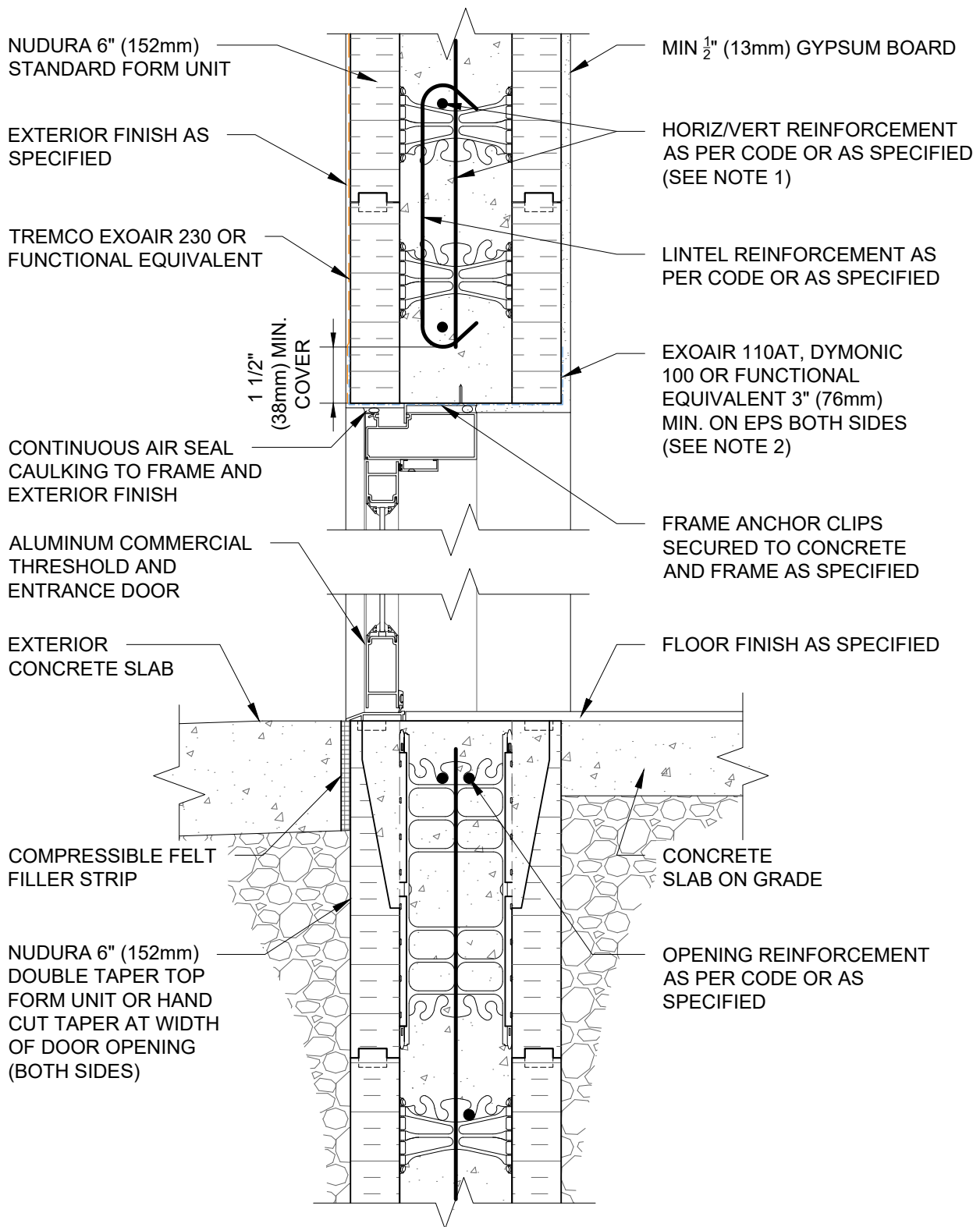
www.tremcocpg.com



Nudura Technical Support: 866-468-6299
International: +1 705-726-9499



Construction Products Group



NOTES:

- 1) FOR OPTIMAL REINFORCEMENT PLACEMENT IN THE NUDURA FORM, SPACING OF HORIZONTAL REINFORCEMENT TO BE SPECIFIED AT 18" (457mm) O.C. AND VERTICAL REINFORCEMENT TO BE SPECIFIED AT MULTIPLES OF 8" (203mm) O.C. REFER TO NUDURA REINFORCEMENT PLACEMENT DETAILS.
- 2) AIR BARRIER/DRAINAGE FLASHINGS TO BE INSTALLED AROUND COMPLETE OPENING PERIMETER AS PER TREMCO/NUDURA APPLICATION INSTRUCTIONS OR AS DETAILED BY LOCAL APPLICABLE CODES (CODE GOVERNS).

This detail is for general informational purposes only. The project design professional determines, in its sole discretion, whether this detail or a functionally equivalent detail is best suited for the project with respect to any architecture, engineering, and design requirements, including any local building code requirements. If this document is not reviewed and the product is not approved for use by a licensed design professional, the customer agrees that the detail may contain substantive flaws requiring correction, and hereby releases Tremco CPG Inc. and Prebuck, LLC from any and all liability related to the design and installation of the product. This detail is subject to change without notice. Contact Tremco and Prebuck to ensure you have the most recent version.

Non Combustible Construction - Doors



Nudura Technical Support: 866-468-6299
International: +1 705-726-9499

Detail: Nudura 6" (152mm) Form Unit, Concrete Mounted Aluminum Entrance Door at Head and Threshold, Exterior Finish as Specified

Drawn by: TVC

Checked by: KS

Scale: 1:8

Revision #: 06

Revised by: KAB

Date: 3/13/2024

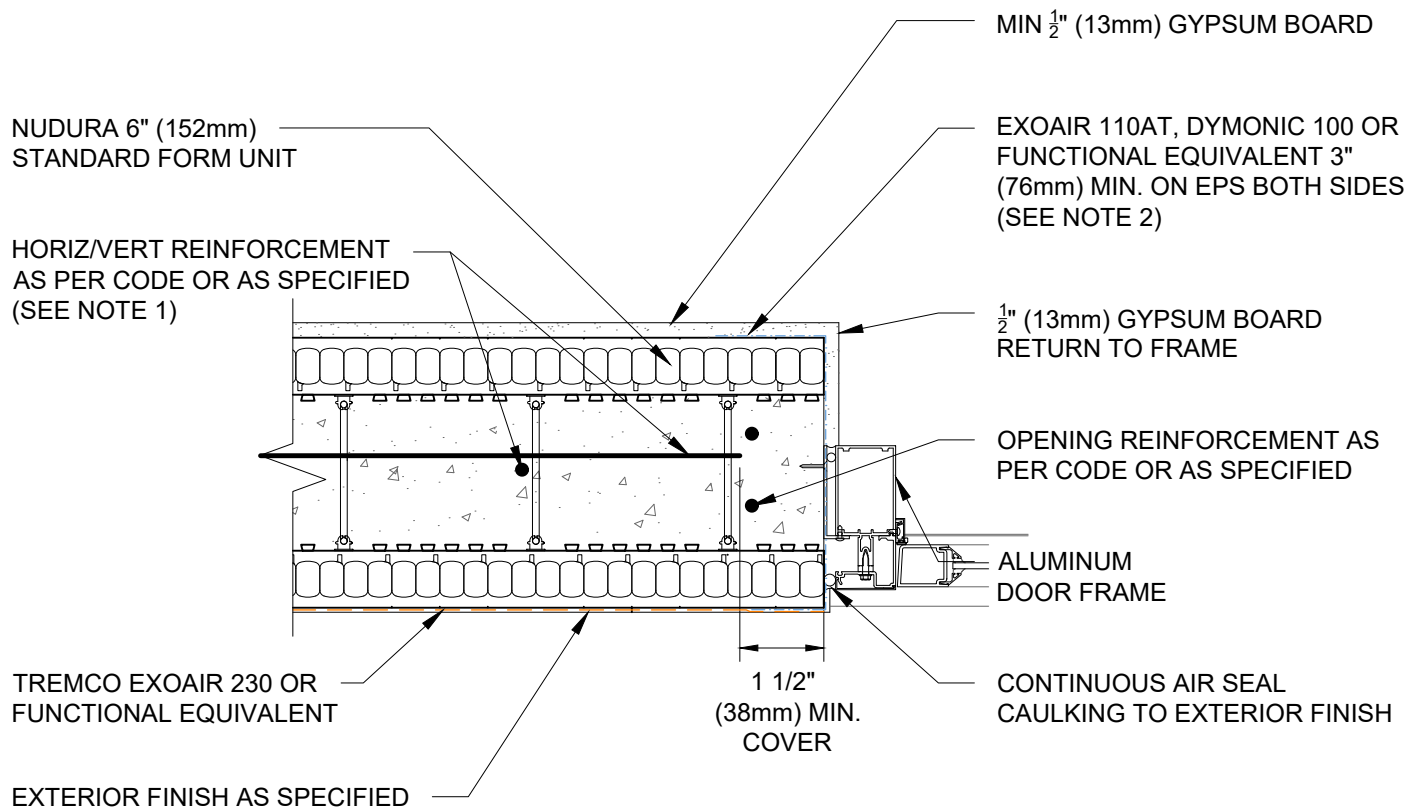
File Name:

E6G09



Construction Products Group

www.tremcocpg.com



NOTES:

- 1) FOR OPTIMAL REINFORCEMENT PLACEMENT IN THE NUDURA FORM, SPACING OF HORIZONTAL REINFORCEMENT TO BE SPECIFIED AT 18" (457mm) O.C. AND VERTICAL REINFORCEMENT TO BE SPECIFIED AT MULTIPLES OF 8" (203mm) O.C. REFER TO NUDURA REINFORCEMENT PLACEMENT DETAILS.
- 2) AIR BARRIER/DRAINAGE FLASHINGS TO BE INSTALLED AROUND COMPLETE OPENING PERIMETER AS PER TREMCO/NUDURA APPLICATION INSTRUCTIONS OR AS DETAILED BY LOCAL APPLICABLE CODES (CODE GOVERNS).

This detail is for general informational purposes, only. The project design professional determines, in its sole discretion, whether this detail or a functionally equivalent detail is best suited for the project with respect to any architecture, engineering, and design requirements, including any local building code requirements. If this document is not reviewed and the product is not approved for use by a licensed design professional, the customer agrees that the detail may contain substantive flaws requiring correction, and hereby releases Tremco CPG Inc. and Prebuck, LLC from any and all liability related to the design and installation of the product. This detail is subject to change without notice. Contact Tremco and Prebuck to ensure you have the most recent version.

Non Combustible Construction - Doors

Detail: Nudura 6" (152mm) Form Unit, Concrete Mounted Aluminum Door Jamb, Exterior Finish as Specified

File Name:

Drawn by: TVC

Checked by: KS

Scale: 1:8

E6G10

Revision #: 04

Revised by: KAB

Date: 3/13/2024

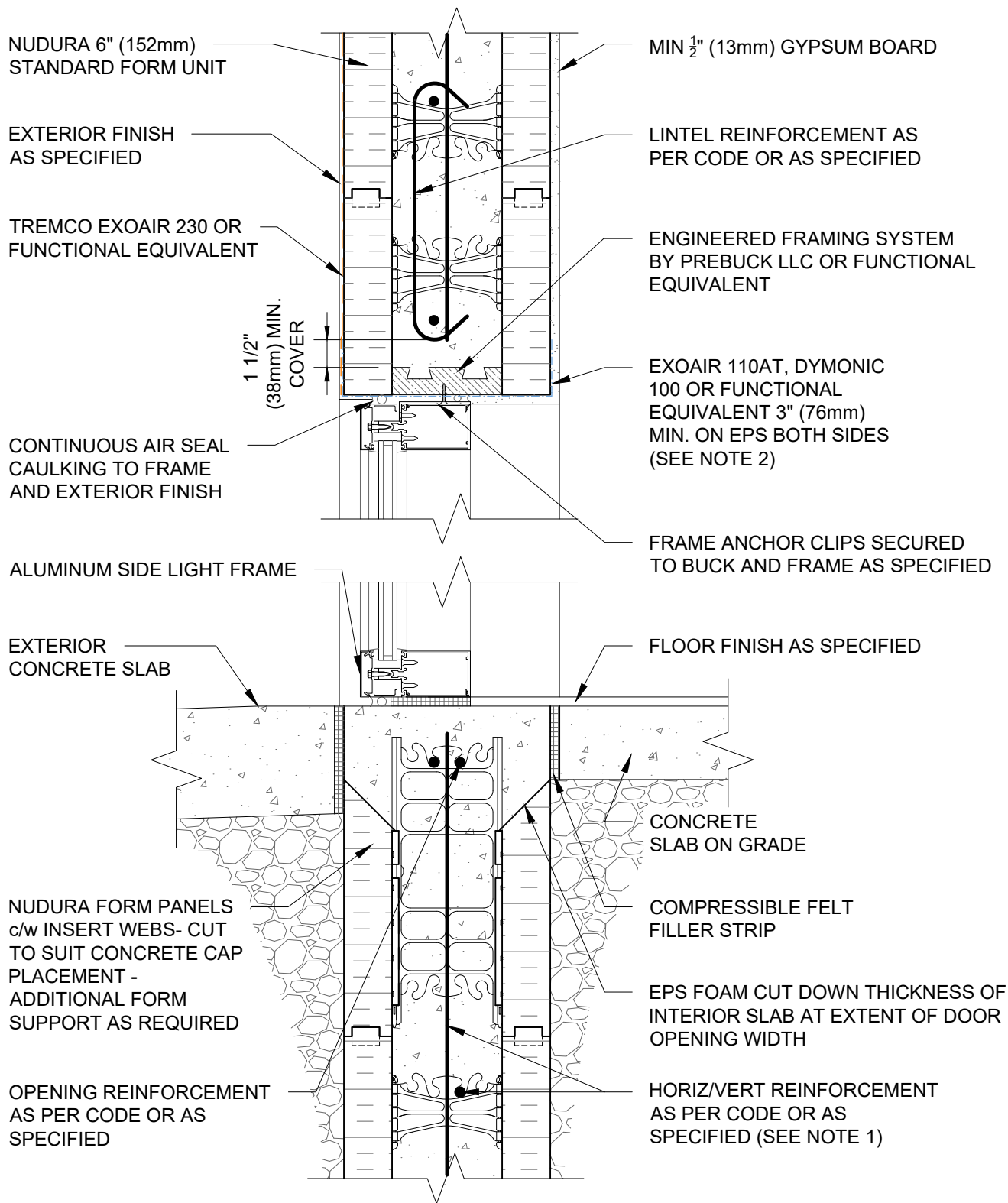
www.tremcocpg.com



Nudura Technical Support: 866-468-6299
International: +1 705-726-9499



Construction Products Group



NOTES:

- 1) FOR OPTIMAL REINFORCEMENT PLACEMENT IN THE NUDURA FORM, SPACING OF HORIZONTAL REINFORCEMENT TO BE SPECIFIED AT 18" (457mm) O.C. AND VERTICAL REINFORCEMENT TO BE SPECIFIED AT MULTIPLES OF 8" (203mm) O.C. REFER TO NUDURA REINFORCEMENT PLACEMENT DETAILS.
- 2) AIR BARRIER/DRAINAGE FLASHINGS TO BE INSTALLED AROUND COMPLETE OPENING PERIMETER AS PER TREMCO/NUDURA APPLICATION INSTRUCTIONS OR AS DETAILED BY LOCAL APPLICABLE CODES (CODE GOVERNS).

This detail is for general informational purposes, only. The project design professional determines, in its sole discretion, whether this detail or a functionally equivalent detail is best suited for the project with respect to any architecture, engineering, and design requirements, including any local building code requirements. If this document is not reviewed and the product is not approved for use by a licensed design professional, the customer agrees that the detail may contain substantive flaws requiring correction, and hereby releases Tremco CPG Inc. and Prebuck, LLC from any and all liability related to the design and installation of the product. This detail is subject to change without notice. Contact Tremco and Prebuck to ensure you have the most recent version.

Non Combustible Construction - Doors



Nudura Technical Support: 866-468-6299
International: +1 705-726-9499

Detail: Nudura 6" (152mm) Form Unit, Wood Buck Mounted Aluminum Transom and Sidelight at Head and Concrete Threshold, Exterior Finish as Specified

Drawn by: TVC

Checked by: KS

Scale: 1:8

Revision #: 04

Revised by: KAB

Date: 3/13/2024

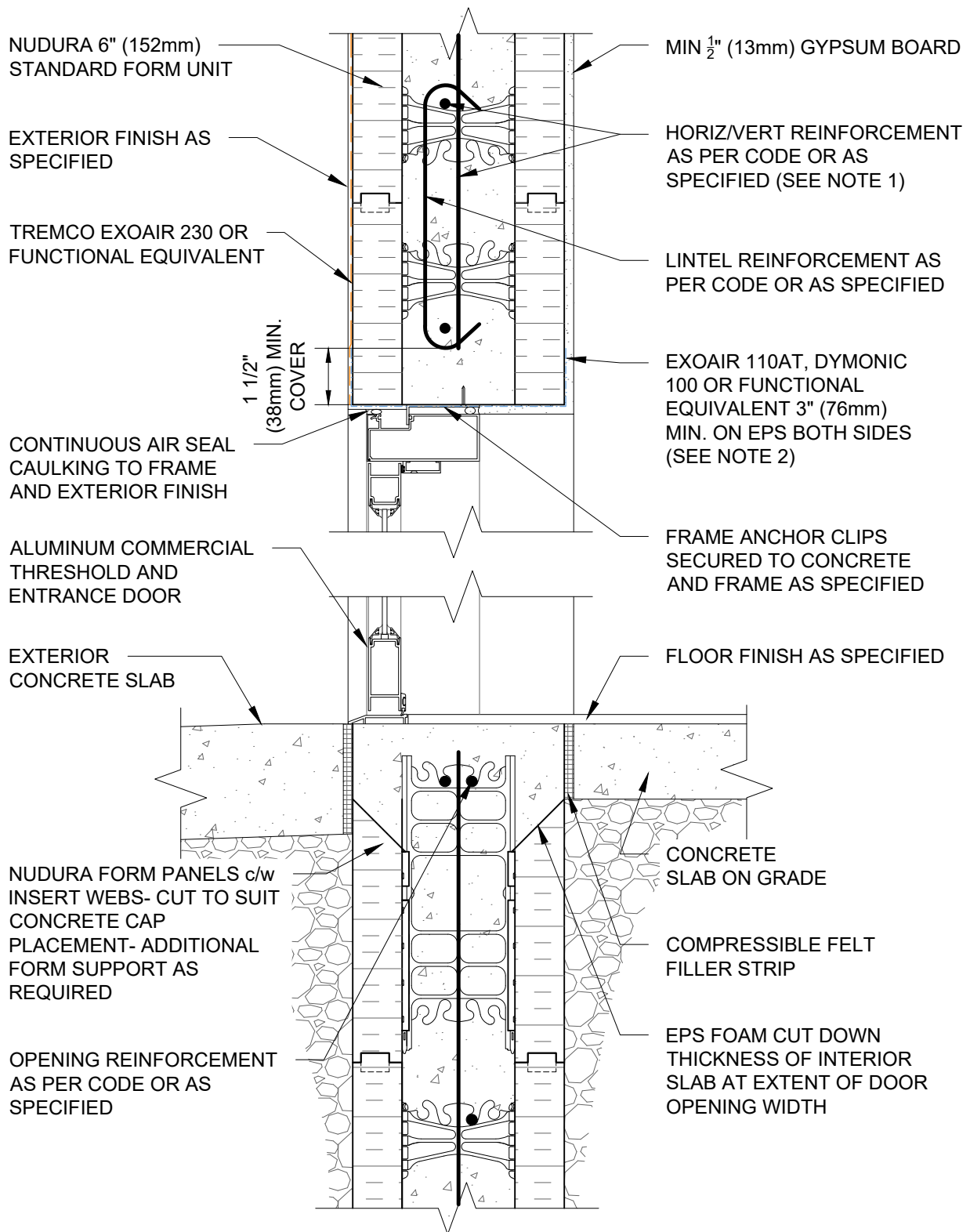
www.tremcocpg.com

File Name:

E6G11



Construction Products Group



NOTES:

1) FOR OPTIMAL REINFORCEMENT PLACEMENT IN THE NUDURA FORM, SPACING OF HORIZONTAL REINFORCEMENT TO BE SPECIFIED AT 18" (457mm) O.C. AND VERTICAL REINFORCEMENT TO BE SPECIFIED AT MULTIPLES OF 8" (203mm) O.C. REFER TO NUDURA REINFORCEMENT PLACEMENT DETAILS.

2) AIR BARRIER/DRAINAGE FLASHINGS TO BE INSTALLED AROUND COMPLETE OPENING PERIMETER AS PER TREMCO/NUDURA APPLICATION INSTRUCTIONS OR AS DETAILED BY LOCAL APPLICABLE CODES (CODE GOVERNS).

This detail is for general informational purposes, only. The project design professional determines, in its sole discretion, whether this detail or a functionally equivalent detail is best suited for the project with respect to any architecture, engineering, and design requirements, including any local building code requirements. If this document is not reviewed and the product is not approved for use by a licensed design professional, the customer agrees that the detail may contain substantive flaws requiring correction, and hereby releases Tremco CPG Inc. and Prebuck, LLC from any and all liability related to the design and installation of the product. This detail is subject to change without notice. Contact Tremco and Prebuck to ensure you have the most recent version.

Non Combustible Construction - Doors



Nudura Technical Support: 866-468-6299
International: +1 705-726-9499

Detail: Nudura 6" (152mm) Form Unit, Concrete Mounted Aluminum Entrance Door at Head and Concrete Threshold, Exterior Finish as Specified

Drawn by: KS

Checked by: KS

Scale: 1:8

Revision #: 01

Revised by: KAB

Date: 3/13/2024

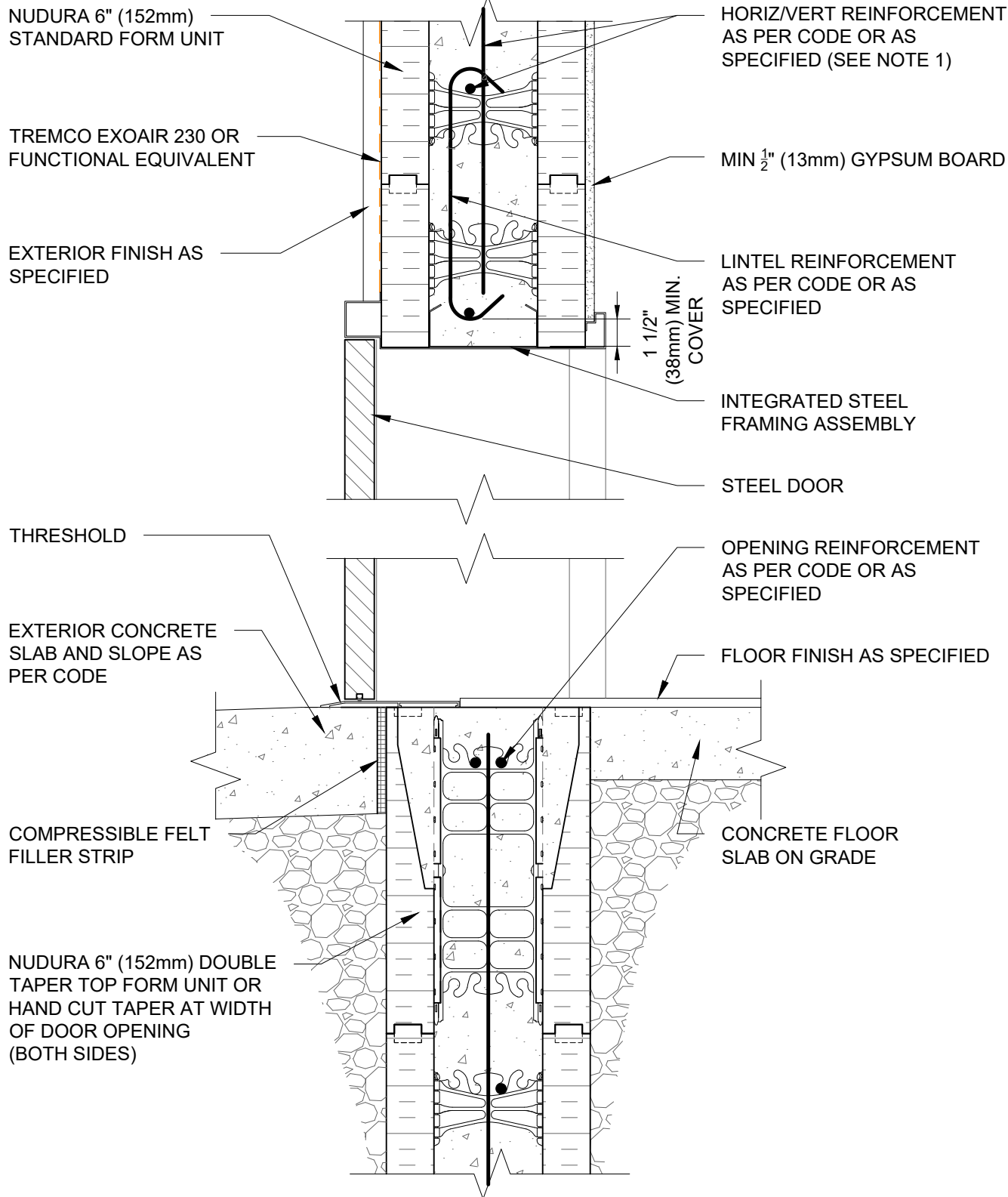
File Name:

E6G12



Construction Products Group

www.tremcocpg.com



NOTES:

- 1) FOR OPTIMAL REINFORCEMENT PLACEMENT IN THE NUDURA FORM, SPACING OF HORIZONTAL REINFORCEMENT TO BE SPECIFIED AT 18" (457mm) O.C. AND VERTICAL REINFORCEMENT TO BE SPECIFIED AT MULTIPLES OF 8" (203mm) O.C. REFER TO NUDURA REINFORCEMENT PLACEMENT DETAILS.
- 2) AIR BARRIER/DRAINAGE FLASHINGS TO BE INSTALLED AROUND COMPLETE OPENING PERIMETER AS PER TREMCO/NUDURA APPLICATION INSTRUCTIONS OR AS DETAILED BY LOCAL APPLICABLE CODES (CODE GOVERNS).

This detail is for general informational purposes, only. The project design professional determines, in its sole discretion, whether this detail or a functionally equivalent detail is best suited for the project with respect to any architecture, engineering, and design requirements, including any local building code requirements. If this document is not reviewed and the product is not approved for use by a licensed design professional, the customer agrees that the detail may contain substantive flaws requiring correction, and hereby releases Tremco CPG Inc. and Prebuck, LLC from any and all liability related to the design and installation of the product. This detail is subject to change without notice. Contact Tremco and Prebuck to ensure you have the most recent version.

Non Combustible Construction - Doors



Nudura Technical Support: 866-468-6299
International: +1 705-726-9499

Detail: Nudura 6" (152mm) Form Unit, Steel Door At Head/Threshold,
Exterior Finish As Specified, Concrete Mounted

Drawn by: TVC

Checked by: KS

Scale: 1:8

Revision #: 05

Revised by: KAB

Date: 3/13/2024

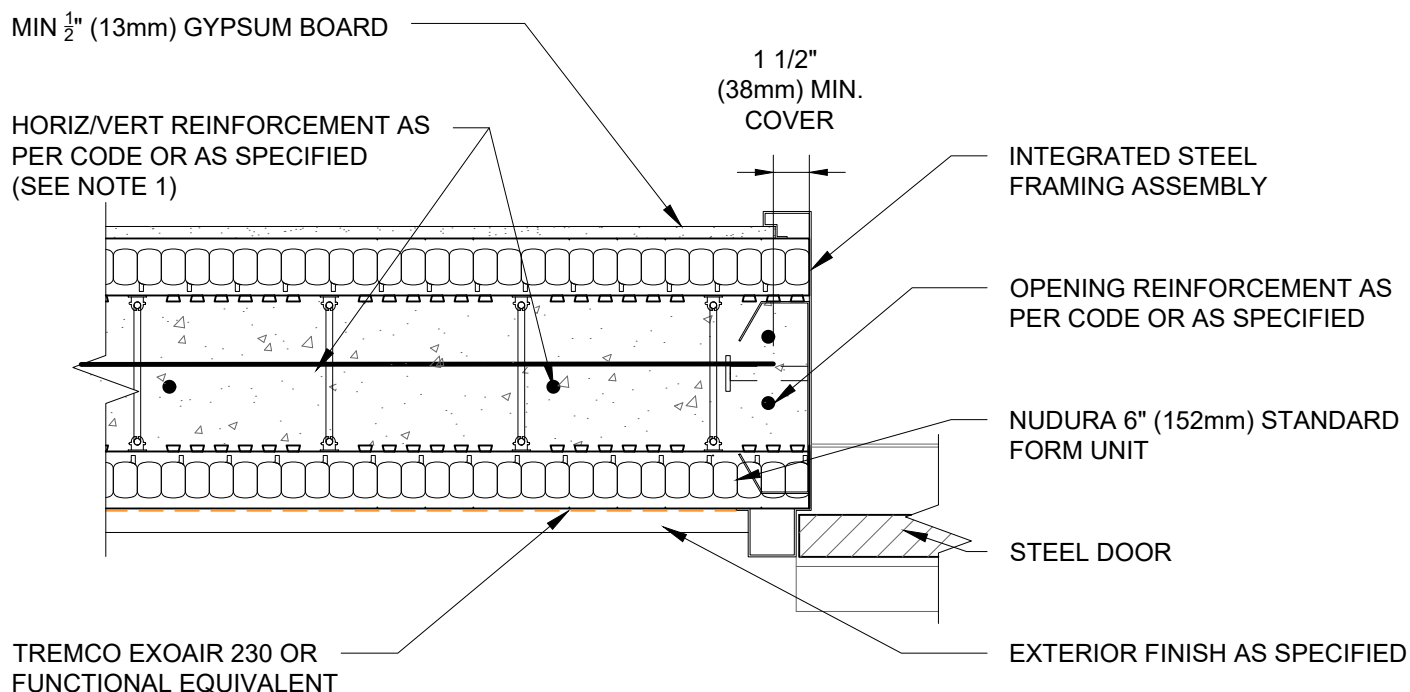
File Name:

E6H03



Construction Products Group

www.tremcocpg.com



NOTES:

- 1) FOR OPTIMAL REINFORCEMENT PLACEMENT IN THE NUDURA FORM, SPACING OF HORIZONTAL REINFORCEMENT TO BE SPECIFIED AT 18" (457mm) O.C. AND VERTICAL REINFORCEMENT TO BE SPECIFIED AT MULTIPLES OF 8" (203mm) O.C. REFER TO NUDURA REINFORCEMENT PLACEMENT DETAILS.
- 2) AIR BARRIER/DRAINAGE FLASHINGS TO BE INSTALLED AROUND COMPLETE OPENING PERIMETER AS PER TREMCO/NUDURA APPLICATION INSTRUCTIONS OR AS DETAILED BY LOCAL APPLICABLE CODES (CODE GOVERNS).

This detail is for general informational purposes, only. The project design professional determines, in its sole discretion, whether this detail or a functionally equivalent detail is best suited for the project with respect to any architecture, engineering, and design requirements, including any local building code requirements. If this document is not reviewed and the product is not approved for use by a licensed design professional, the customer agrees that the detail may contain substantive flaws requiring correction, and hereby releases Tremco CPG Inc. and Prebuck, LLC from any and all liability related to the design and installation of the product. This detail is subject to change without notice. Contact Tremco and Prebuck to ensure you have the most recent version.

Non Combustible Construction - Doors



Nudura Technical Support: 866-468-6299
International: +1 705-726-9499

Detail: Nudura 6" (152mm) Form Unit, Steel Framed Door Jamb Detail,
Exterior Finish As Specified, Concrete Mounted

Drawn by: JN

Checked by: KS

Scale: 1:8

Revision #: 06

Revised by: KAB

Date: 3/13/2024

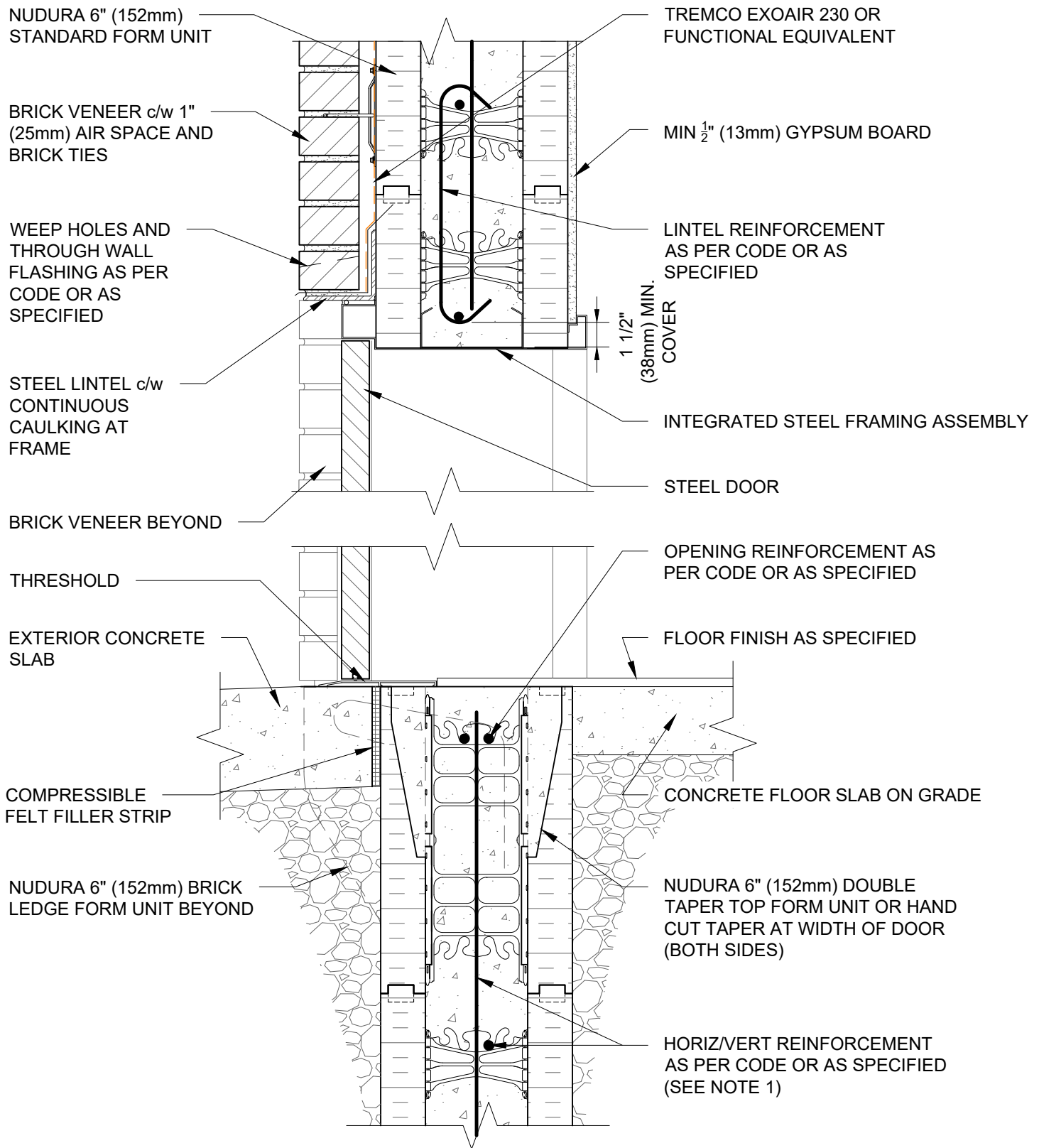
File Name:

E6H04



Construction Products Group

www.tremcocpg.com



NOTES:

- 1) FOR OPTIMAL REINFORCEMENT PLACEMENT IN THE NUDURA FORM, SPACING OF HORIZONTAL REINFORCEMENT TO BE SPECIFIED AT 18" (457mm) O.C. AND VERTICAL REINFORCEMENT TO BE SPECIFIED AT MULTIPLES OF 8" (203mm) O.C. REFER TO NUDURA REINFORCEMENT PLACEMENT DETAILS.
- 2) AIR BARRIER/DRAINAGE FLASHINGS TO BE INSTALLED AROUND COMPLETE OPENING PERIMETER AS PER TREMCO/NUDURA APPLICATION INSTRUCTIONS OR AS DETAILED BY LOCAL APPLICABLE CODES (CODE GOVERNS).

This detail is for general informational purposes, only. The project design professional determines, in its sole discretion, whether this detail or a functionally equivalent detail is best suited for the project with respect to any architecture, engineering, and design requirements, including any local building code requirements. If this document is not reviewed and the product is not approved for use by a licensed design professional, the customer agrees that the detail may contain substantive flaws requiring correction, and hereby releases Tremco CPG Inc. and Prebuck, LLC from any and all liability related to the design and installation of the product. This detail is subject to change without notice. Contact Tremco and Prebuck to ensure you have the most recent version.

Non Combustible Construction - Doors



Nudura Technical Support: 866-468-6299
International: +1 705-726-9499

Detail: Nudura 6" (152mm) Form Unit, Steel Door At Head/Threshold, Brick Veneer Finish, Concrete Mounted

Drawn by: TVC

Checked by: KS

Scale: 1:8

Revision #: 05

Revised by: KAB

Date: 3/13/2024

File Name:

E6H07



Construction Products Group

www.tremcocpg.com

MIN. 1/2" (13mm) GYPSUM BOARD

HORIZ/VERT REINFORCEMENT
AS PER CODE OR AS SPECIFIED
(SEE NOTE 1)

1 1/2"
(38mm) MIN.
COVER

NUDURA 6" (152mm) STANDARD
FORM UNIT

OPENING REINFORCEMENT AS
PER CODE OR AS SPECIFIED

INTEGRATED STEEL
FRAMING ASSEMBLY

STEEL DOOR

CONTINUOUS CAULKING AT
FRAME TO MASONRY

TREMCO EXOAIR 230 OR
FUNCTIONAL EQUIVALENT

BRICK VENEER c/w 1" (25mm)
AIR SPACE AND BRICK TIES

NOTES:

- 1) FOR OPTIMAL REINFORCEMENT PLACEMENT IN THE NUDURA FORM, SPACING OF HORIZONTAL REINFORCEMENT TO BE SPECIFIED AT 18" (457mm) O.C. AND VERTICAL REINFORCEMENT TO BE SPECIFIED AT MULTIPLES OF 8" (203mm) O.C. REFER TO NUDURA REINFORCEMENT PLACEMENT DETAILS.
- 2) AIR BARRIER/DRAINAGE FLASHINGS TO BE INSTALLED AROUND COMPLETE OPENING PERIMETER AS PER TREMCO/NUDURA APPLICATION INSTRUCTIONS OR AS DETAILED BY LOCAL APPLICABLE CODES (CODE GOVERNS).

This detail is for general informational purposes, only. The project design professional determines, in its sole discretion, whether this detail or a functionally equivalent detail is best suited for the project with respect to any architecture, engineering, and design requirements, including any local building code requirements. If this document is not reviewed and the product is not approved for use by a licensed design professional, the customer agrees that the detail may contain substantive flaws requiring correction, and hereby releases Tremco CPG Inc. and Prebuck, LLC from any and all liability related to the design and installation of the product. This detail is subject to change without notice. Contact Tremco and Prebuck to ensure you have the most recent version.

Non Combustible Construction - Doors



Nudura Technical Support: 866-468-6299
International: +1 705-726-9499

Detail: Nudura 6" (152mm) Form Unit, Steel Framed Door Jamb Detail,
Brick Veneer Finish, Direct Attached

Drawn by: TVC

Checked by: KS

Scale: 1:8

Revision #: 05

Revised by: KAB

Date: 3/13/2024

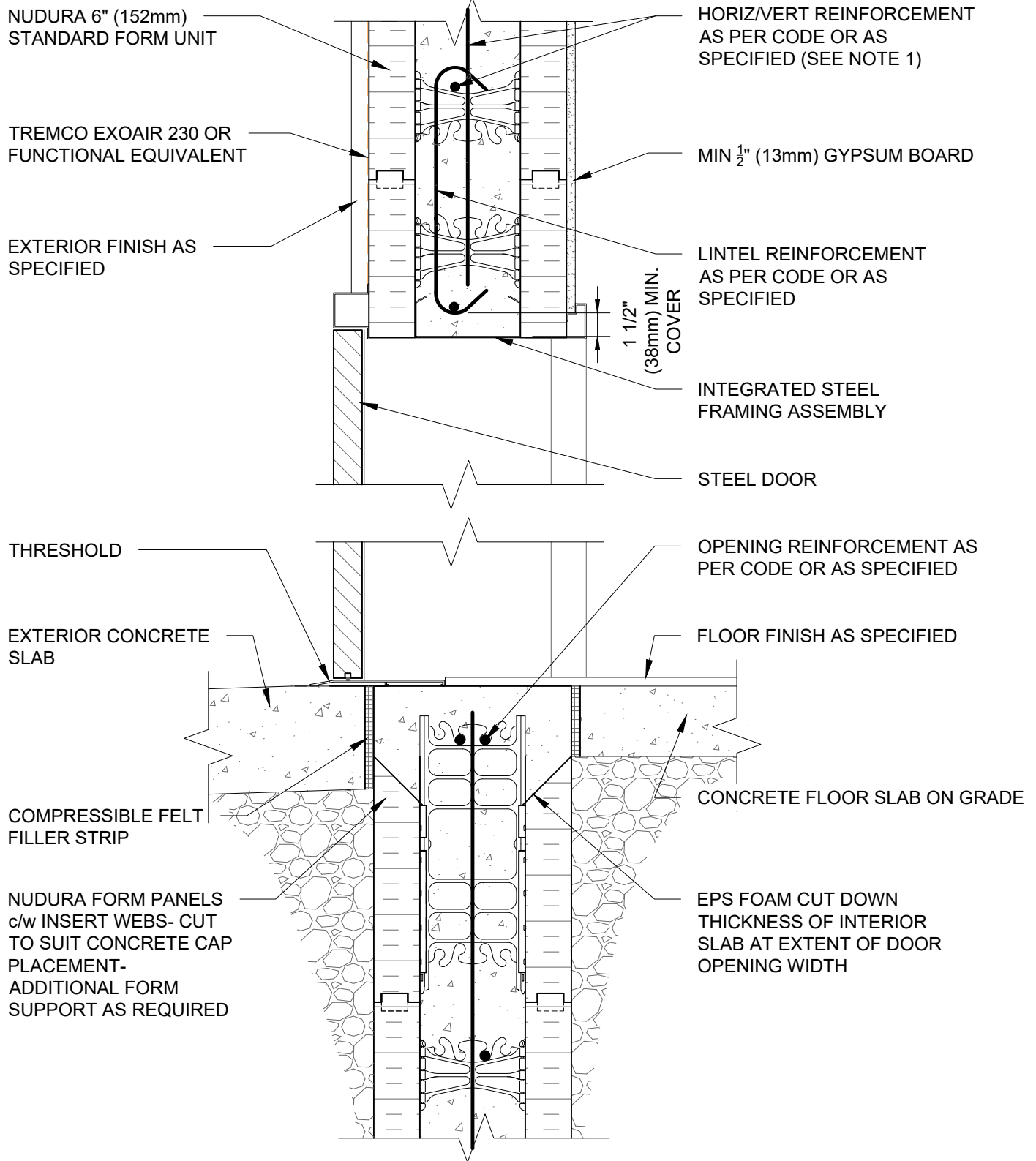
www.tremcocpg.com

File Name:

E6H08



Construction Products Group



NOTES:

- 1) FOR OPTIMAL REINFORCEMENT PLACEMENT IN THE NUDURA FORM, SPACING OF HORIZONTAL REINFORCEMENT TO BE SPECIFIED AT 18" (457mm) O.C. AND VERTICAL REINFORCEMENT TO BE SPECIFIED AT MULTIPLES OF 8" (203mm) O.C. REFER TO NUDURA REINFORCEMENT PLACEMENT DETAILS.
- 2) AIR BARRIER/DRAINAGE FLASHINGS TO BE INSTALLED AROUND COMPLETE OPENING PERIMETER AS PER TREMCO/NUDURA APPLICATION INSTRUCTIONS OR AS DETAILED BY LOCAL APPLICABLE CODES (CODE GOVERNS).

This detail is for general informational purposes, only. The project design professional determines, in its sole discretion, whether this detail or a functionally equivalent detail is best suited for the project with respect to any architecture, engineering, and design requirements, including any local building code requirements. If this document is not reviewed and the product is not approved for use by a licensed design professional, the customer agrees that the detail may contain substantive flaws requiring correction, and hereby releases Tremco CPG Inc. and Prebuck, LLC from any and all liability related to the design and installation of the product. This detail is subject to change without notice. Contact Tremco and Prebuck to ensure you have the most recent version.

Non Combustible Construction - Doors



Nudura Technical Support: 866-468-6299
International: +1 705-726-9499

Detail: Nudura 6" (152mm) Form Unit, Steel Door At Head/Threshold, Concrete Cap At Threshold, Exterior Finish As Specified, Concrete Mounted

Drawn by: KS

Checked by: KS

Scale: 1:8

Revision #: 01

Revised by: KAB

Date: 3/13/2024

File Name:

E6H09



Construction Products Group

www.tremcocpg.com

NUDURA 6" (152mm)
STANDARD FORM UNIT

BRICK VENEER c/w 1"
(25mm) AIR SPACE AND
BRICK TIES

WEEP HOLES AND
THROUGH WALL
FLASHING AS PER
CODE OR AS
SPECIFIED

STEEL LINTEL c/w
CONTINUOUS
CAULKING AT
FRAME

BRICK VENEER BEYOND

THRESHOLD

EXTERIOR CONCRETE
SLAB

NUDURA FORM PANELS
c/w INSERT WEBS- CUT
TO SUIT CONCRETE CAP
PLACEMENT-
ADDITIONAL FORM
SUPPORT AS REQUIRED

NUDURA 6" (152mm) BRICK
LEDGE FORM UNIT BEYOND

HORIZ/VERT REINFORCEMENT
AS PER CODE OR AS
SPECIFIED (SEE NOTE 1)

TREMCO EXOAIR 230 OR
FUNCTIONAL EQUIVALENT

MIN 1/2" (13mm) GYPSUM BOARD

LINTEL REINFORCEMENT
AS PER CODE OR AS
SPECIFIED

INTEGRATED STEEL FRAMING ASSEMBLY

STEEL DOOR

OPENING REINFORCEMENT AS
PER CODE OR AS SPECIFIED

FLOOR FINISH AS SPECIFIED

CONCRETE FLOOR SLAB ON GRADE

NUDURA 6" (152mm) DOUBLE
TAPER TOP FORM UNIT OR HAND
CUT TAPER AT WIDTH OF DOOR
(BOTH SIDES)

1 1/2"
(38mm) MIN.
COVER

NOTES:

- 1) FOR OPTIMAL REINFORCEMENT PLACEMENT IN THE NUDURA FORM, SPACING OF HORIZONTAL REINFORCEMENT TO BE SPECIFIED AT 18" (457mm) O.C. AND VERTICAL REINFORCEMENT TO BE SPECIFIED AT MULTIPLES OF 8" (203mm) O.C. REFER TO NUDURA REINFORCEMENT PLACEMENT DETAILS.
- 2) AIR BARRIER/DRAINAGE FLASHINGS TO BE INSTALLED AROUND COMPLETE OPENING PERIMETER AS PER TREMCO/NUDURA APPLICATION INSTRUCTIONS OR AS DETAILED BY LOCAL APPLICABLE CODES (CODE GOVERNS).

This detail is for general informational purposes, only. The project design professional determines, in its sole discretion, whether this detail or a functionally equivalent detail is best suited for the project with respect to any architecture, engineering, and design requirements, including any local building code requirements. If this document is not reviewed and the product is not approved for use by a licensed design professional, the customer agrees that the detail may contain substantive flaws requiring correction, and hereby releases Tremco CPG Inc. and Prebuck, LLC from any and all liability related to the design and installation of the product. This detail is subject to change without notice. Contact Tremco and Prebuck to ensure you have the most recent version.

Non Combustible Construction - Doors



Nudura Technical Support: 866-468-6299
International: +1 705-726-9499

Detail: Nudura 6" (152mm) Form Unit, Steel Door At Head/Threshold,
Concrete Cap At Threshold, Brick Veneer Finish Concrete Mounted

Drawn by: KS

Checked by: KS

Scale: 1:8

Revision #: 01

Revised by: KAB

Date: 3/13/2024

File Name:

E6H10



Construction Products Group

www.tremcocpg.com